

FIREREADER V10

Expand your territories

Scientific high end gel doc camera

!! *We have realised the importance of resolution and pixel depth when doing quantification. We are impressed by the fantastic results we obtain with our FireReader system. All our images are optimised for quantification and quick to take, saving us a lot of time.* **!!**

> Light your fire

• 16-bit depth camera

FireReader V10's high resolution specifications boast the highest performance camera available for gel documentation. Based on a 16-bit pixel depth, the camera's superb quality offers pictures with up to 65,535 grey levels that enrich your research level data.

The dynamic range of up to 4.8 orders of magnitude gives users greater confidence when imaging even the most difficult fluorescent samples.

• Documentation and quantification

FireReader V10 is ideal for both documentation and quantification. Thanks to our proprietary technology, its superb 6-megapixel native resolution can be extended to 10 megapixels for the most resolution-demanding applications.

> Visualize in 3D, Capture, edit, analyse

FireReader V10 is a new concept of Gel imaging acquisition: fully automatic (light, lens, focus, zoom), you just need 1 click to take the best picture.

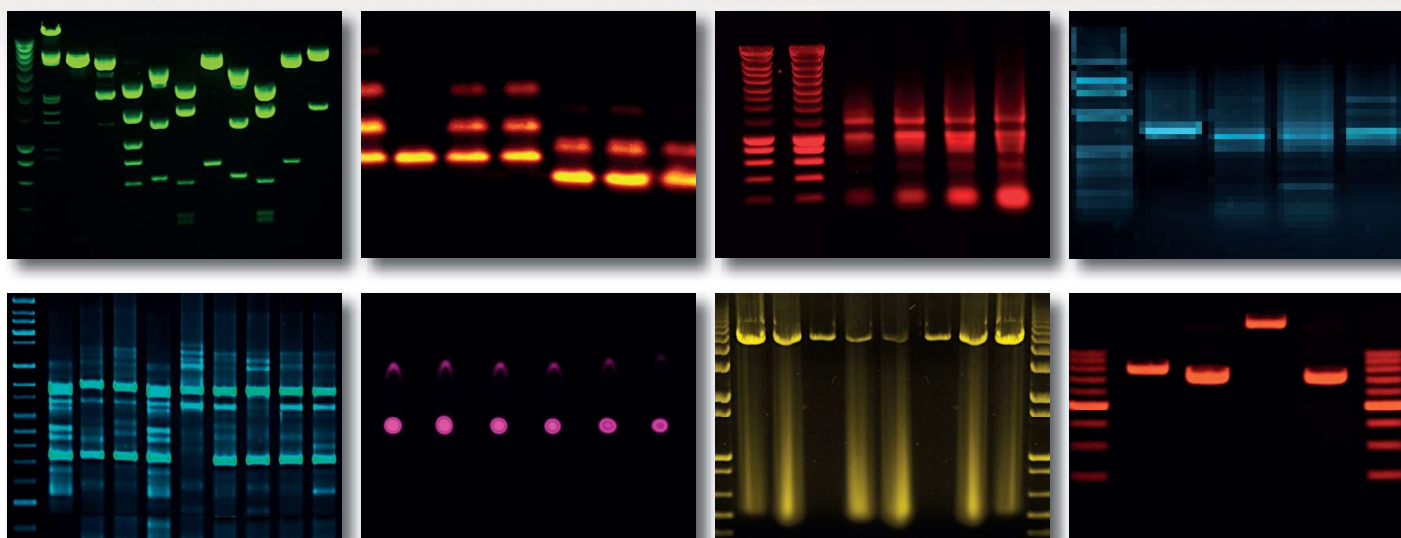
Uvitec-1D software is easy to use and sophisticated enough to allow ultra-precise optimisation when capturing the image. With, for instance, a live-3D view to set up the exposure time and control the saturation and ensure that all bands are quantifiable. You can also decide to select the efficient "auto-exposure" mode for a safe and rapid image acquisition and use the editing options of the software to enhance the image, annotate, archive and analyse.

• Image acquisition and quantification

Images may be enhanced in a great number of ways including contrast and brightness adjustment, mirror imaging, image inversion and annotation (text and symbols). Displayed images can be converted into several colour scales (red, blue, green and multi-coloured palette) without affecting the data before being analysed to determine molecular weight and optical density.

> Chemical attraction

- Fluorescence & visible imaging
- Epi-blue LED fluorescence for safe dyes applications and epi-blue fluorescence on blots
- Quantification & documentation
- Gene expression, protein expression. RNA/DNA assay, colonies, safe gels, GFP, FITC, CY2...
- Open to most dyes available on the market from Invitrogen, GE Life Science, ThermoFisher, Sigma, Millipore, Promega



UV FLUORESCENCE
EPI-BLUE FLUORESCENCE (GFP, FITC...)
VISIBLE IMAGING
OPTIONAL EPI-UV (TLC, QDOTS...)



THE HOT LIST

> Push the button

- Extreme sensitivity for the faintest fluorescence sample
- Scientific camera with massive 16-bit pixel depth (65 535 grey levels)
- Suitable for both routine documentation & critical quantitative applications
- 6-megapixel native camera resolution and up to 10-megapixel image resolution.
- Auto-exposure
- Autofocus with automatic zoom and light system
- Optional epi-UV 365nm for TLC applications, Qdots...
- Ideal for DNA, RNA and protein gels and safe gels
- Patented Uvipure technology available
- Dynamic range up to 4.8 orders of magnitude
- Suitable for both routine documentation and critical quantitative applications
- 6-position filter wheel. Up to 12 custom filters available.
- USB 3.0 ports available for fastest connection/transfer
- "One-touch" fully automated image acquisition programme
- Inclusive of free Uvitec-1D software for both image acquisition and analysis
- Several choices of transilluminator (single, dual wavelength, special Uvipure technology ...)
- UV safety switch and override button
- Advanced UVIband software available



UV Fluorescence & Colorimetry

FireReader V10

The FireReader V10 is a super-powerful, multi-applications, full imaging platform, offering up to 7 different illuminations and countless possible applications. Boasting huge 6-megapixel sensor, the FireReader geldoc system delivers up to 65,535 gray levels, ideal for publication-level images and research-level data.

Dims > Height: 585 mm - Width: 380 mm - Depth: 475 mm

Weight > With Transilluminator: 36 Kg - Without: 30 Kg

Practicality

- ▶ **1-click to image** > effortless acquisition, in no time
- ▶ **No manual control** > hands-off, automated routines
- ▶ **Fully slide-out tray** > hassle-free sample positioning
- ▶ **All-in-one** > acquisition – editing – analysis, straight away

Optics

- ▶ **6,000,000 pixels** > superb, publication-level images
- ▶ **65,535 gray levels** > research-level protein quantification
- ▶ **6x zoom lens** > responsive optics for a versatile imaging area
- ▶ **Passive cooling** > reduced noise for clearer images

Applications

- ▶ **Uvipure© technology** > enhanced UV for EtBr and all safe stains
- ▶ **Epi blue light** > cover more apps such as GFP, eGFP, Cy2, FITC
- ▶ **Quantitative analysis** > against one or several band(s) of reference
- ▶ **Fully-customizable** > 100% adjustable parameters and protocols

Darkroom

- ▶ **Stainless steel** > long-lasting, robust instrument
- ▶ **Customizable** > large choice of transilluminators
- ▶ **6-position wheel** > and up to 18 filters to choose from
- ▶ **Compact design** > small footprints and easy fit

▶ Fluorescence	DNA and RNA gels with fluorescent stains
▶ Epi Fluorescence	Epi blue LED illumination & Optional Epi dual-UV 254 & 365nm illumination
▶ Visible Imaging	Optional Colorimetry and Protein gels